

Fishwick Primary School



Return to School Plan

March 2021

At Fishwick Primary we have been working hard on our plans for a full reopening ensuring that we:

- fulfil the expectations required of us
- ensure that the safety of everyone is paramount in all our decisions and actions
- continue to provide a high quality, well balanced curriculum to best support our pupils in their education.

Keeping children and staff safe

All schools must comply with health and safety law, which requires them to assess risks and put in place proportionate control measures. Essential measures include:

- a requirement that people who are ill stay at home
- robust hand and respiratory hygiene
- enhanced cleaning arrangements
- active engagement with NHS Test and Trace
- formal consideration of how to reduce contacts and maximise distancing between those in school, wherever possible, and minimise potential for contamination so far as is reasonably practicable

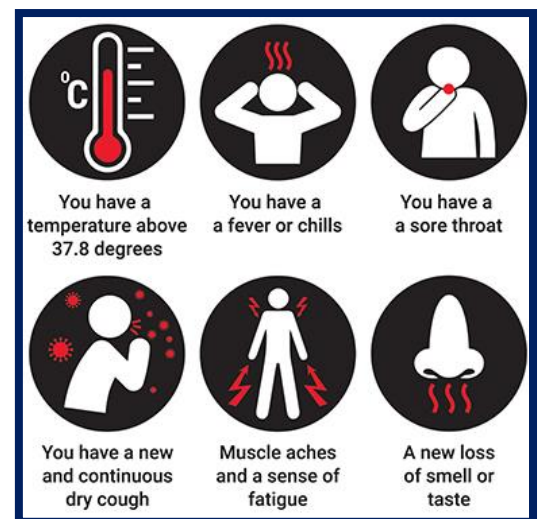
All schools have been provided with a set of actions to 'prevent' and 'respond to infection' which are summarised below:

Prevention:

- minimise contact with individuals who are unwell
- clean hands thoroughly and more often than usual
- ensure good respiratory hygiene - 'catch it, bin it, kill it'
- enhanced cleaning
- minimise contact between individuals and maintain social distancing wherever possible
- where necessary, wear appropriate personal protective equipment (PPE)

Response to any infection:

- engage with the NHS Test and Trace process
- manage confirmed cases of coronavirus (COVID-19) amongst the school community
- contain any outbreak by following local health protection team advice



Class 'bubbles'



We will continue to group each class into 'bubbles' which will remain consistent and separate from other 'bubbles'.

Where possible the children will be in their own class bubble with their own teacher and support staff.

This will '*make it quicker and easier in the event of a positive case to identify those who may need to self-isolate, and keep that number as small as possible*'.

Staff

Sunshine Bubble	Earth Bubble
Kirsty King Nic Newton Sarah Baldwin Ellie Hodson Tracey Bromley	Nicola Pilkington Saima Ali Emily Pickervance Nichola Shaw
Mars Bubble	Jupiter Bubble
Tara Robb / Rebecca Kealey Laura Flavell Yvonne McComb Katy Holloran	Abbey Hargreaves Michelle Daneliuk Jane Dryland Sarah Walker
Saturn Bubble	Neptune Bubble
Gemma Dimond Gill Carroll Tas Patel	Hannah Lupton Danielle Grayston

Attendance

All children will be welcomed back to Fishwick Primary School from Monday 8th March and attendance is mandatory.

We support the government here, which notes:

- *parents' duty to secure that their child attends regularly at school where the child is a registered pupil at school and they are of compulsory school age;*
- *schools' responsibilities to record attendance and follow up absence;*
- *the availability to issue sanctions, including fixed penalty notices in line with local authorities' codes of conduct.*

Shielding children

Where a pupil is unable to attend school because they are following with clinical and/or public health advice, please contact Mrs Conway to discuss how we can work with you to support your child in the best possible way we can.

Before Your Child Leaves Home in The Morning

Please check for any of the following symptoms

- A continuous, dry cough
- A high temperature above 37.8°C
- A loss of, or change to, their sense of smell or taste

If your child has any of these symptoms do not send them to school, contact Mrs Conway or Mrs Garnham on 01772 491402.

Government advice must be followed, it can be [found here](#).

Travel to and from school

In line with current government guidelines we encourage parents, staff and pupils to walk to school if at all possible. Children and families should ensure they are following social distancing guidelines whilst travelling to and from school.

Face coverings are required at all times on public transport (including for children, over the age of 11)

Morning Drop Offs

First day back is Monday 8th March

There will be slightly staggered starts and endings to the school day. The playground gates will open at 8.45am.

- Sunshine Class morning session 8.55am Nursery entrance
- Sunshine Class afternoon session 12.15pm Nursery entrance
- Mars and Earth Class will be 9am on the front playground
- Jupiter, Saturn and Neptune 8.55am at the rear of school

We would encourage only 1 parent/adult to drop off and collect to help minimise the number of adults on site. We would also request that adults wear a face covering unless they are medically exempt.

Where possible we are encouraging a “kiss and drop” approach at the gate. There will be lots of familiar staff to welcome the children and guide them to their classrooms.

Breakfast club will be strictly socially distanced, is only be available for parents requiring support for work and must be booked in advance. If you haven't already had a place confirmed please email the office to request a place.

admin@fishwick.lancs.sch.uk

End of the day – Collection

To ensure we are minimising contact and ensuring social distancing at the end of the day the children will be brought out to their parent/adult at their allocated time. Parents are requested to wait at their child's collection point and the class will be brought out to them.

- Sunshine Class morning session 11.55am Nursery entrance
- Sunshine Class afternoon session 3.15pm Nursery entrance
- Mars and Earth Class will be 3.10pm on the front playground
- Jupiter, Saturn and Neptune 3.15pm at the rear of school

Once your child's class has been brought out and you have collected your child, please leave the school site as quickly as possible to allow other parents to collect their children as safely as possible.

Arrangements in school

It will not be possible, nor is it required, to enforce social distancing measures with children. This means that children will come into contact with all the children in their class. Children will wash their hands often and surfaces and equipment will be regularly sanitised.

Learning resources

For individual and very frequently used equipment, such as pencils and pens, staff and pupils in KS2 will have their own items that are not shared. Classroom based resources, such as books and games, can be used and shared within the class bubble; these will be cleaned regularly, along with all frequently touched surfaces. In KS1 and KS2 resources that are shared between classes or bubbles, such as sports, art and science equipment will be cleaned frequently and meticulously and always between bubbles, or rotated to allow them to be left unused and out of reach for a period of 48 hours (72 hours for plastics) between use by different bubbles.

Assemblies

There will be no traditional whole school assemblies but these will be replaced by assemblies with individual 'bubbles' or TEAMS remote assemblies.

Reading Books

Reading books can still be brought home, however on their return to school they will be placed in a box and left for 48 hours before returning to the shelves. If your child has a reading book at home, please return on the first day back.

Enhanced cleaning regimes

Since lockdown and opening for keyworker children our school has had enhanced cleaning systems in place and has also been regularly deep cleaned. Staff have all been working together to ensure that much more cleaning goes on during the school day – with particular attention paid to those surfaces that are frequently touched like door handles.

Coats and bags

As children have their own cloakroom facilities in their individual classrooms coats and bags can be left in their normal places. Please keep items brought into school to a minimum as much as possible.

The importance of fresh air

Windows and doors will be left open as much as possible to aid ventilation. Teachers will plan many outdoor learning activities and therefore it is essential that the children come suitably dressed for all weather possibilities.

After School Clubs

There will be no clubs in the Spring Term.

School Office

All other communication should be done by telephone or e-mail as far as possible. Any parent needing to come into the office area should ensure that they wear a face covering.

Communication

Communication with parents is really important to us. Due to the current restrictions we would request that meetings with members of staff are by prior arrangement only so that social distancing and safety precautions can be put in place. If you would like a phone conversation or a face to face meeting please email admin@fishwick.lancs.sch.uk or telephone the office 01772 491402 to support making these arrangements.

Behaviour

Our Fishwick values and Golden Rules remain unchanged, and children are expected to aim to uphold them.

In addition to our Fishwick Golden Rules the children must be aware of these new requirements:

- Stay at least 1+ metres apart from staff and children outside of their bubble.
- Use their own specific equipment (including resources) and not share any of these;
- Do not share any food, drinks, cups or water bottles;
- Work, eat and play in our designated group, and minimise contact with children from other bubbles (including in the playground, anywhere on the school site and on our way to and from school)
- Move around school as instructed by our teacher/adult and avoiding other people
- Never cough, sneeze or spit towards another person; catch all coughs and sneezes in a tissue and throw it away (catch it, bin it, kill it), then wash our hands

- Wash hands frequently (including whenever we are asked to), with soap and water for 20 seconds (e.g. by singing happy birthday twice) or with hand sanitiser if soap and water are not available;

It is essential that the children listen to and follow instructions at all times and adhere to the guidelines set by the government and the school. This is required inside school and outside during breaks and lunches. Any child who is unable to do this is risking the safety of themselves, other children and staff. A risk assessment will be completed to determine whether it is safe to have this child back in school. If we deem a child to be unsafe to have in school, we will work with parents to arrange provision the child can access safely.

School lunches.

Our school kitchen will be open and lunches will be available as usual. Pupils eligible for free school meals will return to having their lunch at school, and will no longer receive vouchers.

We have arrangements in place to ensure that during lunch time separation between 'bubbles' is maintained. Children will always have the chance to wash their hands before eating.

Packed lunches

Please ensure your child has everything they need and their meal is easy for them to manage on their own.

Water Bottles

All pupils will be given a disposable bottle of water each day.

School Uniform

Children will be expected to be in school uniform.

Children or staff suspected of having COVID-19

In line with DfE guidance in the case of a suspected infection the school will:

- engage with the NHS Test and Trace process.
We ask that parents and staff inform the school immediately of the outcome of any test;
- manage confirmed cases of coronavirus (COVID-19) amongst the school community. The school will text parents with a notification of a confirmed infection including which 'bubble' this may affect. We will not share the names or details of people suspected of having or confirmed to have coronavirus;
- contain any outbreak by following local health protection team advice. For the avoidance of doubt the new advice says that we 'must send home those people who have been in **close contact** with the person who has tested positive, advising them to self-isolate for 14 days since they were last in close contact with that person when they were infectious.

'Close contact' now means:

- face to face contact with an infected individual for any length of time, within 1 metre, including being coughed on, a face to face conversation, or unprotected physical contact (skin-to-skin);
 - proximity contacts - extended close contact (within 1 to 2 metres for more than 15 minutes) with an infected individual;
 - travelling in a small vehicle, like a car, with an infected person.
- When a case is suspected in school the child will be immediately isolated from other pupils and staff. Staff supervising these children should also try to ensure they remain two metres away while still aiming to

provide the reassurance and care particularly young children will need. Enhanced PPE is available for these staff and older children may be offered a mask. The school will contact parents and request they collect their child from the school immediately.

- We ask that parents whose child has been identified as having a suspected case of COVID-19 should seek immediate medical advice.

The guidance says *'Anyone who displays symptoms of coronavirus (COVID-19) can and should get a test.'*

If no test is undertaken then we expect children to self isolate according to the Public Health England guidance here: <https://www.gov.uk/government/publications/covid-19-stay-at-home-guidance/stay-at-home-guidance-for-households-with-possible-coronavirus-covid-19-infection>

Households with a confirmed case of Coronavirus should follow the advice laid out by Public Health England here: <https://www.gov.uk/government/publications/covid-19-stay-at-home-guidance> regarding isolation and should keep their school informed about their planned date of return following isolation.